



GD500-2 2V500AH GD SERIES-Deep Cycle Battery



Applications

- ◆ Electric tools
- ◆ Vehicle in place of walking
- ◆ Lawn mowers
- ◆ Golf trolleys and golf cart
- ◆ Portable apparatus, lights and instruments;
- ◆ Electric toys
- ◆ Illumination light
- ◆ Fire alarms
- ◆ Portable power
- ◆ Wheelchairs
- ◆ Solar energy systems
- ◆ Marine
- ◆ RV
- ◆ Medical equipments.

ISO 9001	ISO 14001	OHSAS 18001	TLC
CE	RoHS	UL	OV BATTERY

Specification

Nominal Voltage	2V		
Nominal Capacity(10HR)	500.0AH @10hr-rate to 1.80V per cell @25°C		
Dimension	Length	240±2mm (9.45 inches)	
	Width	175±2mm (6.89 inches)	
	Container Height	330±2mm (12.99 inches)	
	Total Height (with Terminal)	350±2mm (13.78 inches)	
Approx Weight	Approx 26.7 Kg (58.86 lbs)		
Terminal	T11		
Container Material	ABS		
Max. Discharge Current	2500A (5s)		
Internal Resistance	Approx 0.62mΩ		
Operating Temp.Range	Discharge	-20~60°C (-4~140°F)	
	Charge	0~50°C (32~122°F)	
	Storage	-20~60°C (-4~140°F)	
Nominal Operating Temp. Range	25±5°C (77±41°F)		
Float charging Voltage	2.27 to 2.3 VDC/unit Average at 25°C		
Recommended Maximum Charging Current Limit	100 A		
Equalization and Cycle Service	2.43 to 2.47 VDC/unit Average at 25°C		
	40°C (104°F)	103%	
	25°C (77°F)	100%	
Capacity affected by Temperature	0°C (32°F)		86%
	Self Discharge		
	JYC GD series battery may be stored for up to 6 months at 25°C(77°F) and then a freshening charge is required. For higher temperatures the time interval will be shorter.		

Constant Current Discharge Characteristics: A (25°C)

F.V/Time	15MIN	30MIN	1HR	2HR	3HR	4HR	5HR	6HR	8HR	10HR
1.60V	678.9	500.7	312.2	191.5	142.6	102.3	89.58	80.43	64.92	52.08
1.65V	645.5	480.7	308.2	184.5	136.7	98.8	88.68	78.49	62.02	51.58
1.70V	601.9	453.2	302.2	181.5	133.7	97.9	87.41	76.55	61.05	51.09
1.75V	534.4	407.8	278.3	171.6	126.7	92.5	86.28	72.68	59.11	50.54
1.80V	460.0	371.5	262.3	163.6	121.7	91.6	84.79	71.71	58.14	50.07
1.85V	389.0	334.4	242.4	154.6	115.7	84.39	79.80	67.83	55.23	47.01

Constant Power Discharge Characteristics: W(25°C)

F.V/Time	15MIN	30MIN	1HR	2HR	3HR	4HR	5HR	6HR	8HR	10HR
1.60V	1188	912.4	580.9	358.3	265.8	192.3	178.1	155.2	123.5	103.8
1.65V	1157	907.5	577.9	353.2	260.6	189.5	176.4	153.2	122.5	102.8
1.70V	1093	858.9	572.2	348.0	256.6	188.7	174.3	149.6	120.6	102.2
1.75V	973.8	774.0	536.7	329.4	247.4	179.3	171.9	142.3	116.8	101.1
1.80V	842.9	706.2	510.4	314.6	237.2	178.4	168.9	140.6	114.9	100.3
1.85V	718.8	636.7	473.4	297.8	226.0	165.3	159.4	133.2	109.2	94.50

Note The above data are average values, and can be obtained with 3 charge/discharge cycles. These are not minimum values.

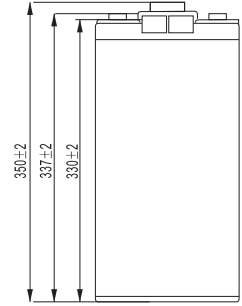
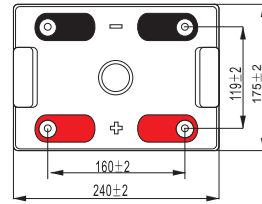
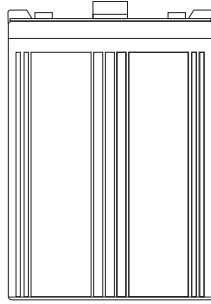
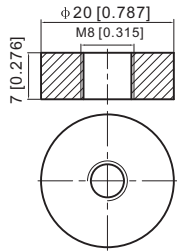


GD500-2 2V500AH GD SERIES-Deep Cycle Battery

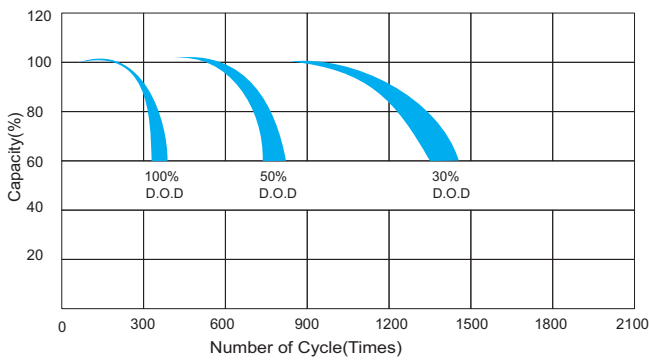
Dimensions

T11 Terminal

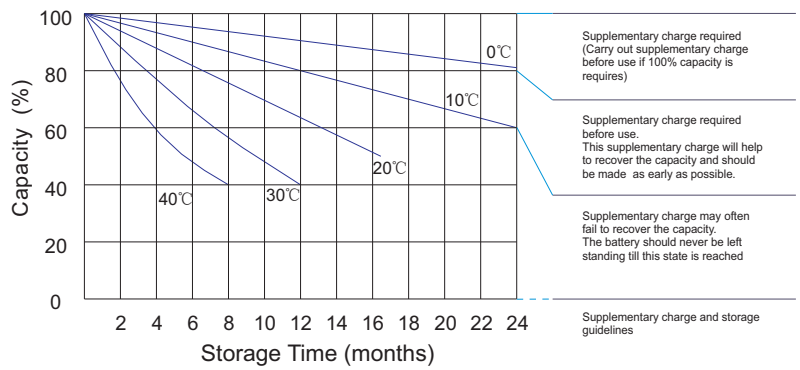
Unit: mm [inches]



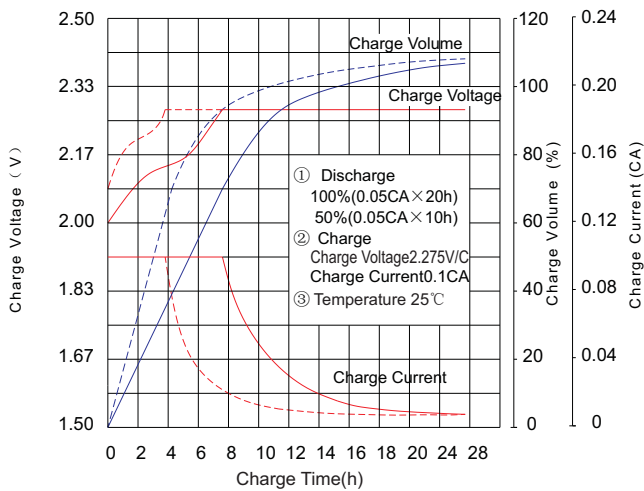
Life characteristics of cyclic use



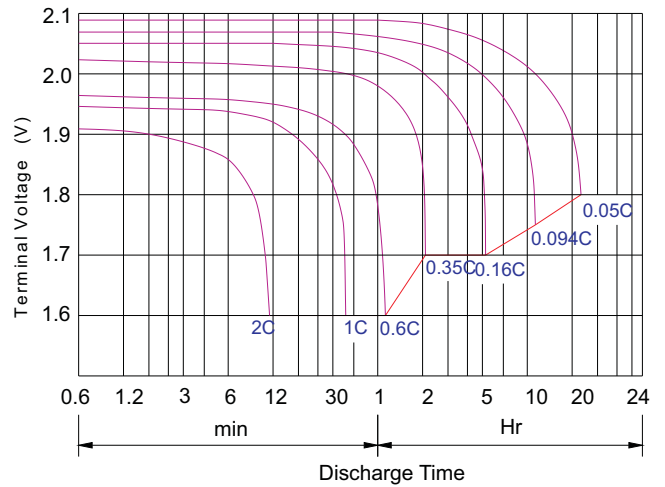
Storage characteristic



Charge characteristic Curve for standby use



Discharge characteristic Curve



JYC GD BATTERIES

This information is generally descriptive only and is not intended to make or imply any representation, guarantee or warranty with respect to any cells and batteries. Cell and battery designs/ specification are subject to modification without notice. Contact JYC for the latest information.